

MODERN LUXURY

Interiors

NEW YORK

BRANCH OUT
FROM LUXE LIGHTING TO
PRINTS, IDEAS TO BRING
THE OUTSIDE IN

GROWTH MINDSET

YOUR ULTIMATE GUIDE TO
OUTDOOR LIVING



INTERIORS TO INSPIRE

The image shows a modern interior space, likely a dining or living area, within a converted barn. The room features large, multi-paned windows that offer a view of a lush green landscape. The architecture is characterized by thick, weathered wooden posts and beams, some of which are repurposed from the original barn structure. A prominent horizontal beam is supported by two vertical posts. In the foreground, there is a dark, round table with a thick, dark wooden top. A black, modern-style chair is visible in the lower right. A large, dark, curved object, possibly a piece of art or a decorative element, is on the table. The lighting is soft and natural, coming from the windows. The overall aesthetic is a blend of rustic and modern design.

The Great Escape

Designer Todd Raymond transforms a 200-year-old barn into the ultimate Hudson Valley hideout.

BY PRIYANKA RAJPUT
PHOTOGRAPHED BY ADRIAN GAUT



A Cowrie bent chair by Brodie Neill pairs with a Tacchini sofa and vintage Paul Kingma cocktail table.



The clients purchased the home shortly before the pandemic.



Clockwise from top: Wooden beams create an industrial, rustic aesthetic; Wolf appliances in the kitchen; Mikael Kenta's "Jesus" (2017) hangs behind May Furniture's Sunday table; accent table from Gestalt New York.



THE PROJECT

Todd Raymond, designer and founder of NYC-based Studio Todd Raymond, was called on to transform a 2,500-square-foot Hudson Valley barn house into an upscale weekend home by a pair of New York-based lawyers. The three-bedroom, two-and-half-bathroom home, initially a Dutch barn, had a dated yellow maple finish in every room, which was completely stripped out and painted black to highlight the wooden beams and infuse a distinctly industrial look. "We wanted to create a space that had a minimalist but refined aesthetic and exuded a warm and welcoming environment for our clients and their guests," says Raymond.

THE PROCESS

The clients had total faith in Raymond and his team. "They were very involved and enjoyed the design process as much as us, without ever rushing us to buy things all at once," he shares. "This allowed us to shop together, ponder over each selection and its use in the home, and the opportunity to travel to see other spaces for inspiration." This unhindered approach gave Raymond and his team the space to make thoughtful design decisions over the course of two years. "We wanted the furniture and art to be bold and stand up against the architecture, but we also wanted to highlight the architecture and emphasize the fact that we are in a 200-year-old barn," adds Raymond. "And instead of going heavy on colors, we played with different textures to give it a classic rustic look."

Clockwise from top: Beds were sourced from West Elm; in the home office, a desk by BluDot and rug from Benisouk; a reclaimed Russian oak bench.



THE CHALLENGE

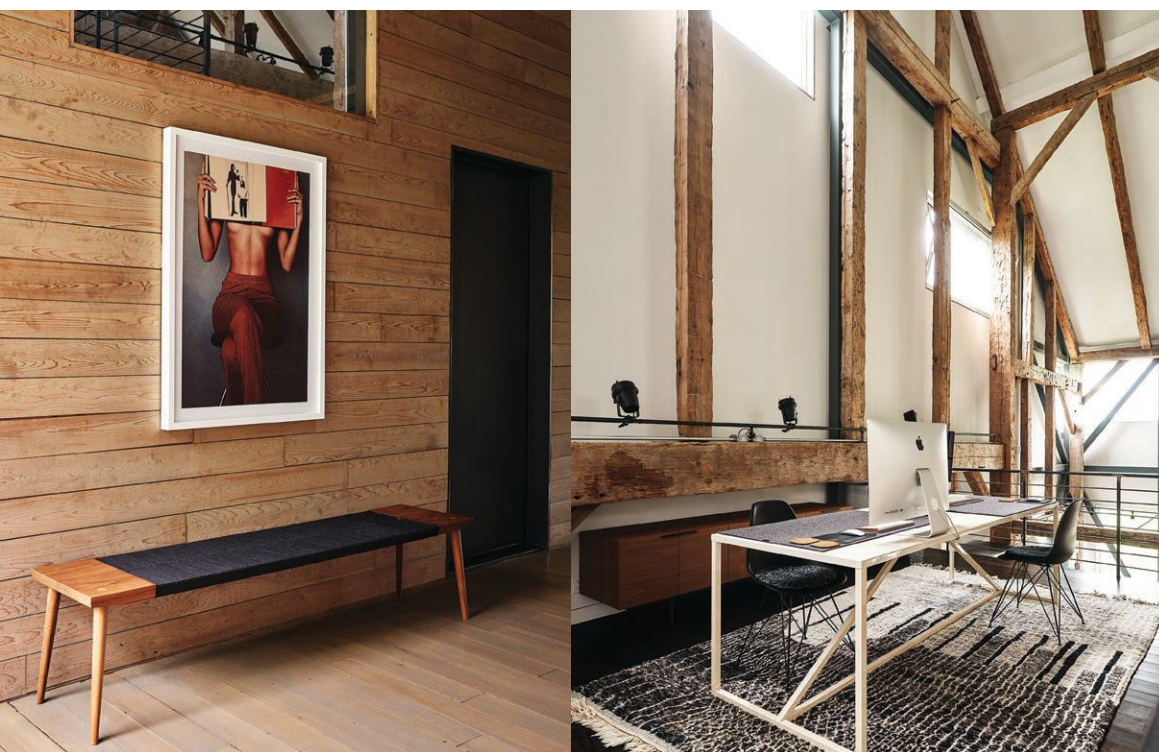
The project began before the pandemic, but once lockdown measures were announced, there were a series of unexpected challenges that Raymond and his team had to face. From navigating COVID-related health concerns to grappling with shipping delays, they had to pivot and adapt on the fly. And though most of the indoor renovations had already been completed, there was still no furniture. To top that, the team also had a rather out-of-the-box incident. “A bear ate one of our pillows!” shares Raymond. “We had some pillows delivered via FedEx, and before the client could get the box inside, a bear found it and tore it up. Needless to say, we had to have new ones made.”

THE DETAILS

The house’s lower floor features a carefully curated selection of statement furniture. Most of them are black, which contrasts the light hues of shearling and linen spread across the living room. Adding a bit of Brutalist drama, an industrial-strength fireplace stands out in the living room, while the bedroom boasts large windows with picturesque views of the woods. The house comes complete with an outdoor area featuring a firepit resting on a bed of pebbles and black Adirondack chairs perfect for entertaining guests.


THE OUTCOME

Despite the challenges, the overall project was an absolute pleasure for Raymond and his team to work on. “As a designer, it’s a recipe for success when you have a cool space and fantastic clients willing to trust you,” he concludes. “I’m very happy with how the space turned out and how it feels like a combination of all things interesting, calm, layered and comfortable.”



Gestalt New York's woven rattan lounge chair





“I’M VERY HAPPY
WITH HOW THE
SPACE TURNED OUT
AND HOW IT FEELS
LIKE A COMBINATION
OF ALL THINGS
INTERESTING, CALM,
LAYERED AND
COMFORTABLE.”

-TODD RAYMOND



Patio furniture
was sourced
from RH.

DESIGN DETAILS

DESIGNER

Studio Todd Raymond
studiotoddraymond.com

ARCHITECT

Preston Scott Cohen, Inc.
prestonscottcohen.com

BUILDER

Keith Sartorini, Sartorini
Constructio
sartoriniconstruction.com

LANDSCAPE ARCHITECT

Jeff Haab, Haab Landscaping
haablandscaping.com

RESOURCES

WORKSTEAD

Lighting fixture in dining room
workstead.com

SACCO

Living room rug
saccocarpet.com

OVERLAND

Australian sheepskin
overland.com

WEST ELM

Bed
westelm.com

DESIGN BY THEM

Dining chairs
designbythem.com

GESTALT NEW YORK

Living room accent tables
and woven rattan lounge
chair in bedroom
gestaltnewyork.com

ZAK + FOX

Pillows in living room
zakandfox.com